

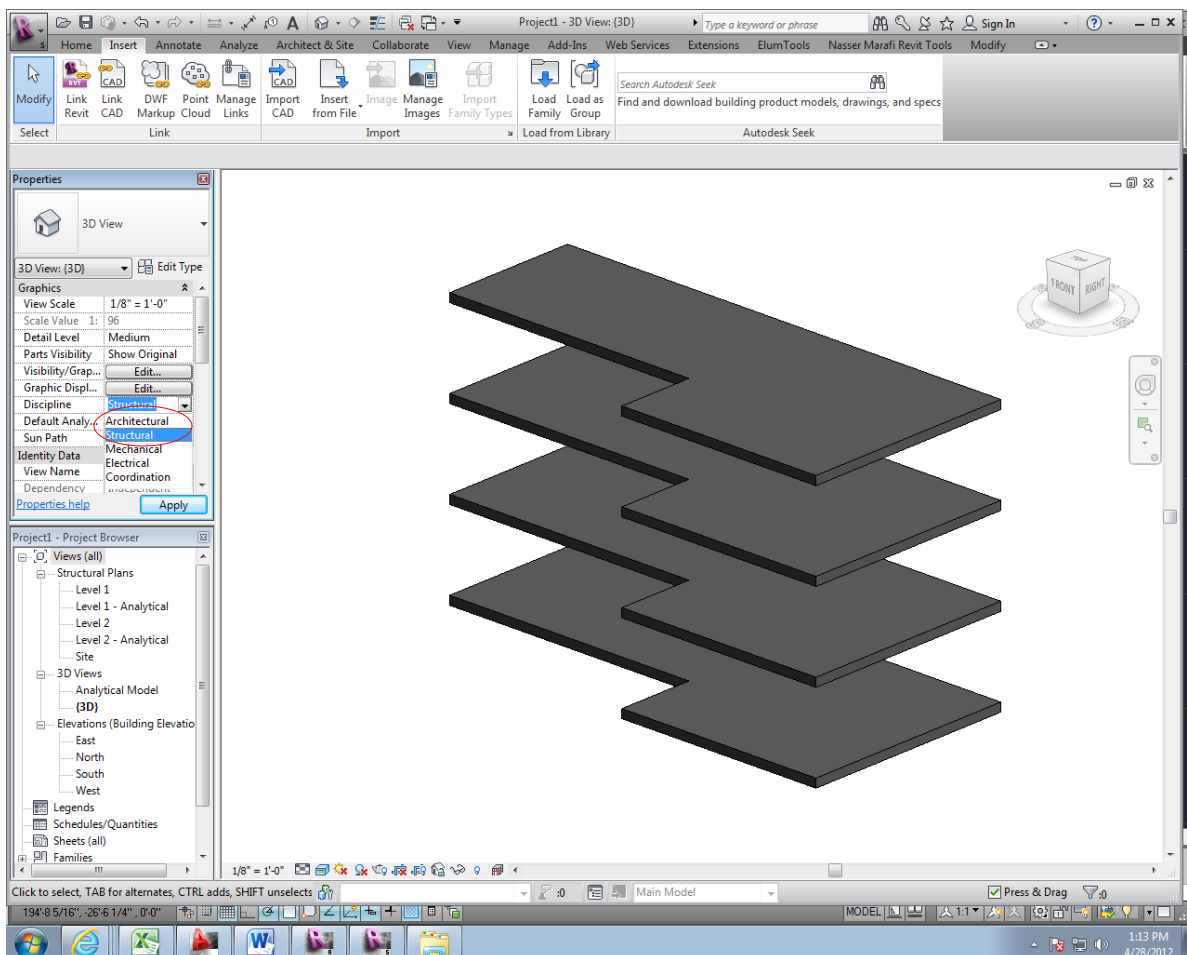
Sharing Editable Levels between Revit Programs

This BIMWiki will show how to share levels between linked Revit Architecture, MEP, and Structural models. It is also possible to share other parameters by going through this process, but only levels will be focused on during this How To. Sharing editable levels between the different models allows for accurate measurements and placement of different modeling components and is a great tool for multistory buildings.

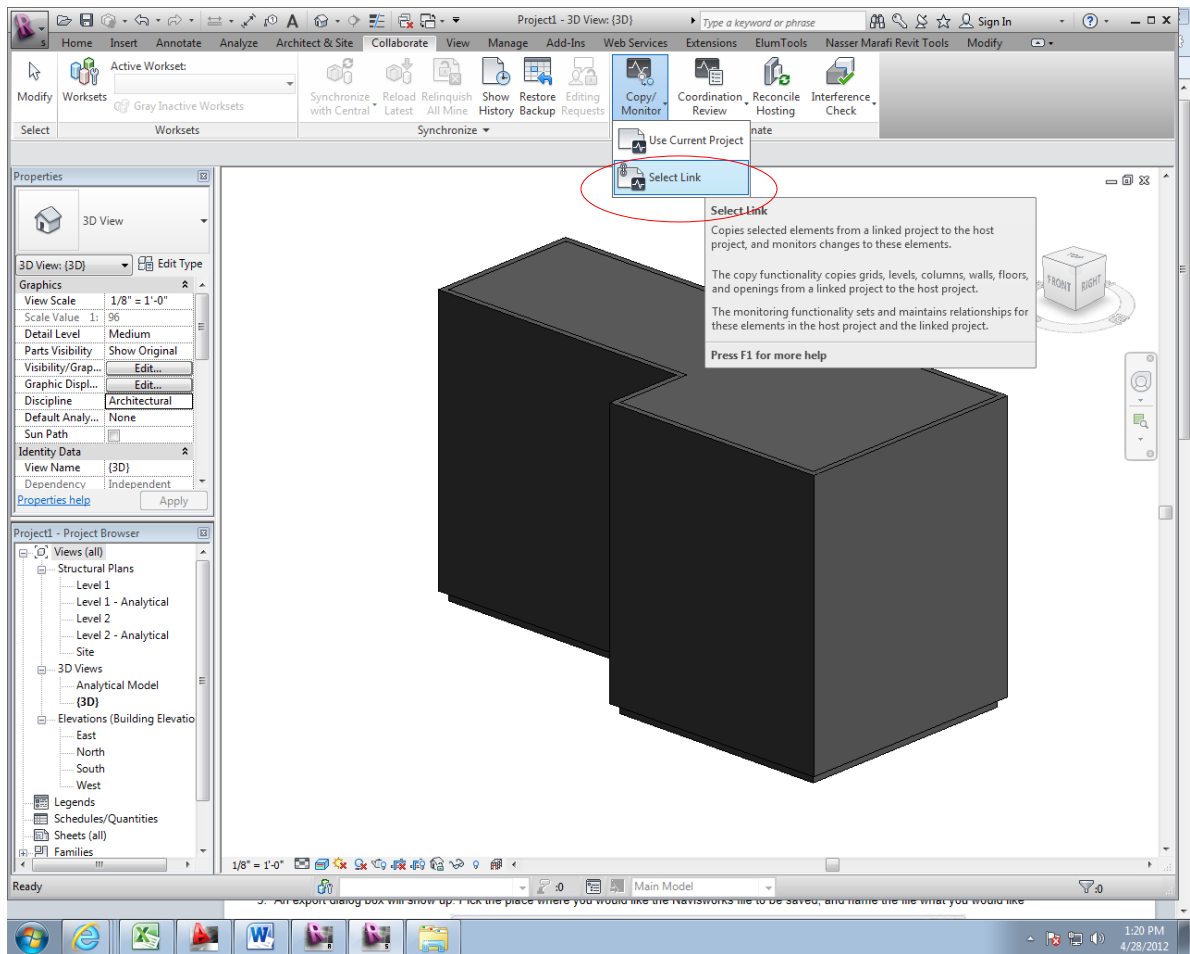
The Process:

*Note: This How To requires that you already have two Revit models linked to one another. The following will use two basic linked models.

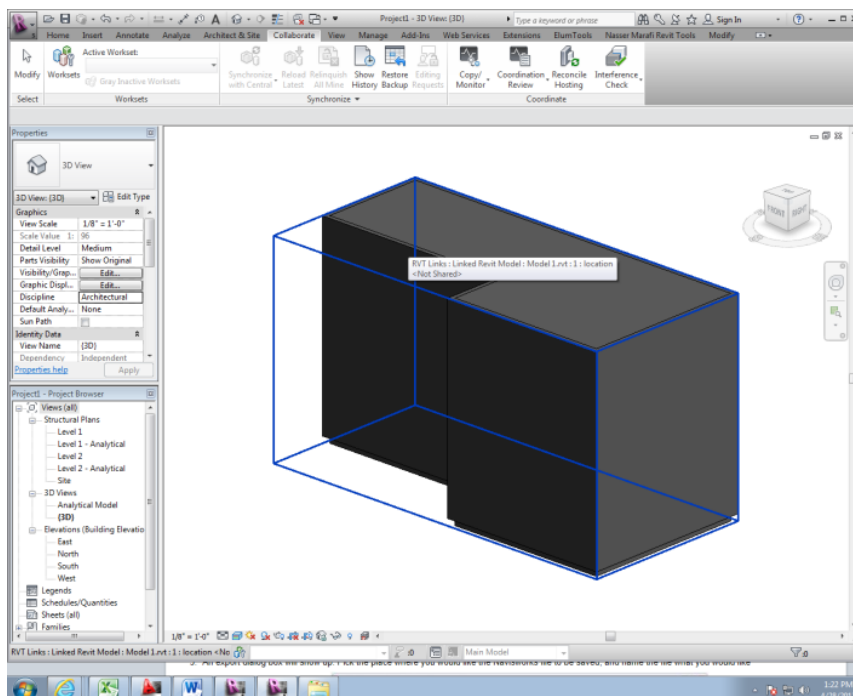
1. Begin with the model that you would like to transfer levels to. In this How To we will be working in Revit Structure and transferring the levels from a linked Revit Architecture File named "Model 1".
2. In the 3D View first change the discipline view from "structural" to "architectural" so that it is easier to see all linked components.



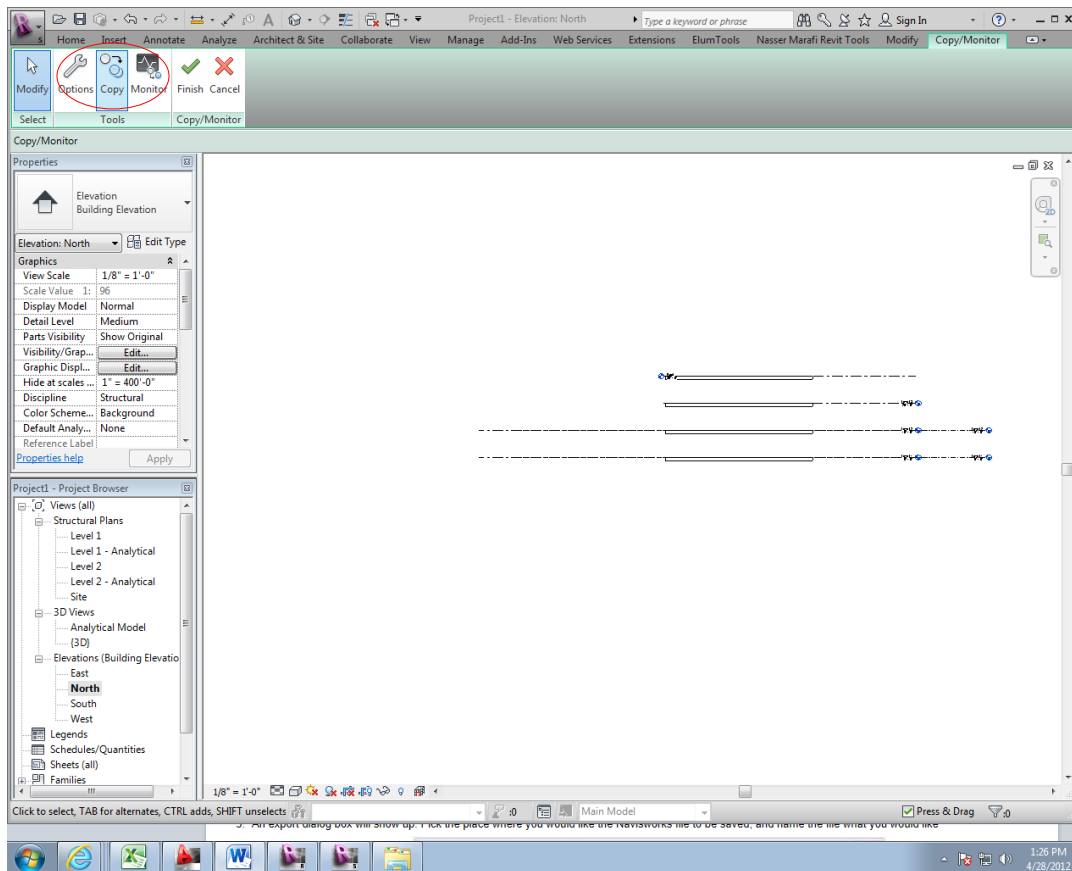
3. In the Collaborate Tab select “Copy/Monitor” ; “Select Link”



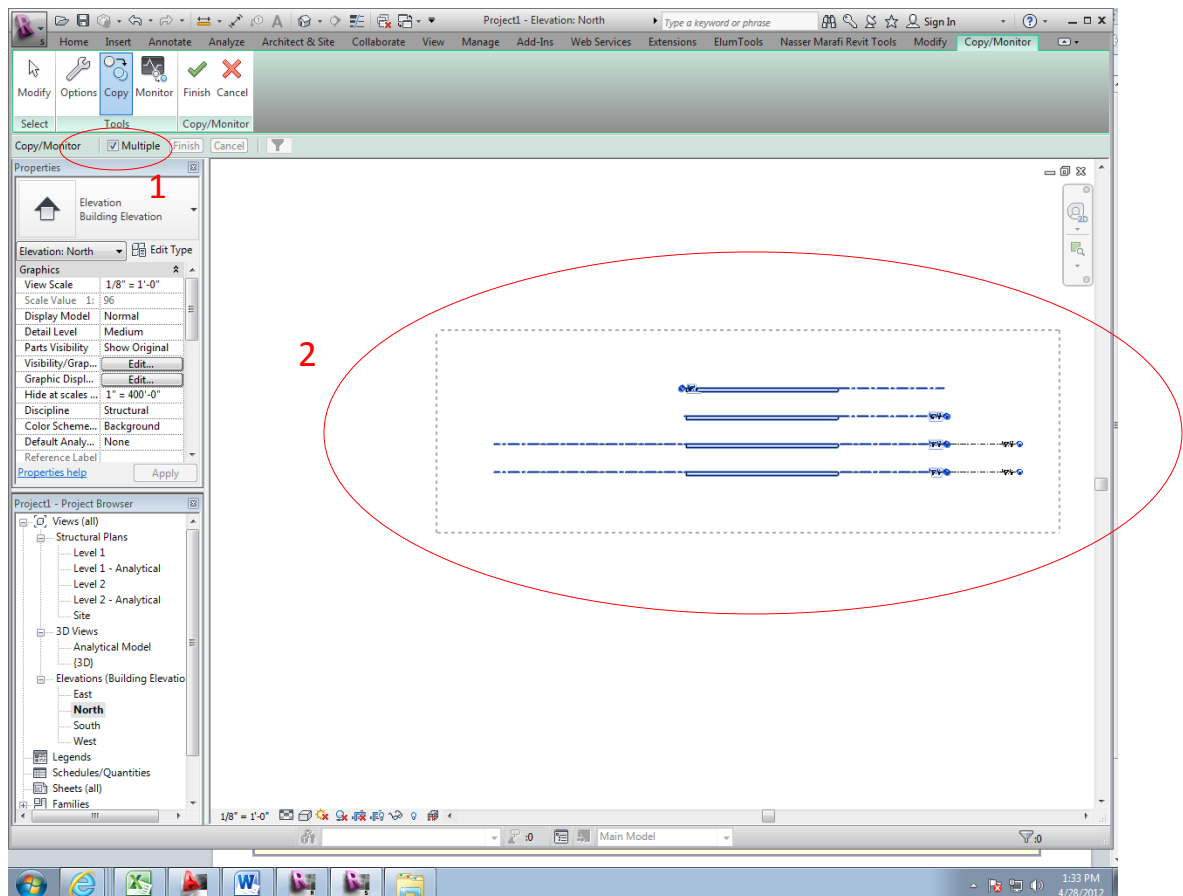
4. Click on the linked Arch Model. A blue box should appear around it before selecting it to let you know that you have it highlighted.



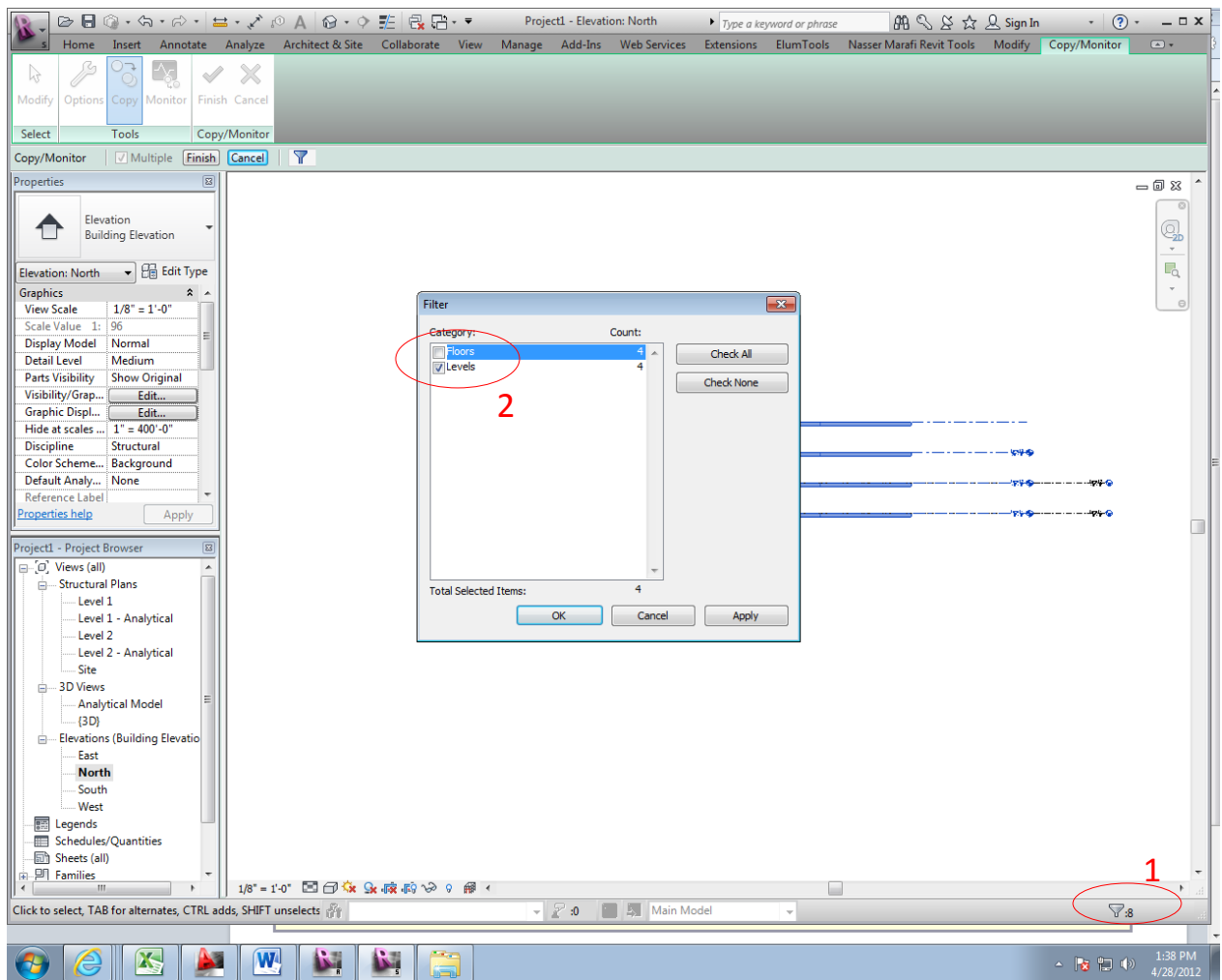
5. Go to any elevation view and click on the “Copy” button.



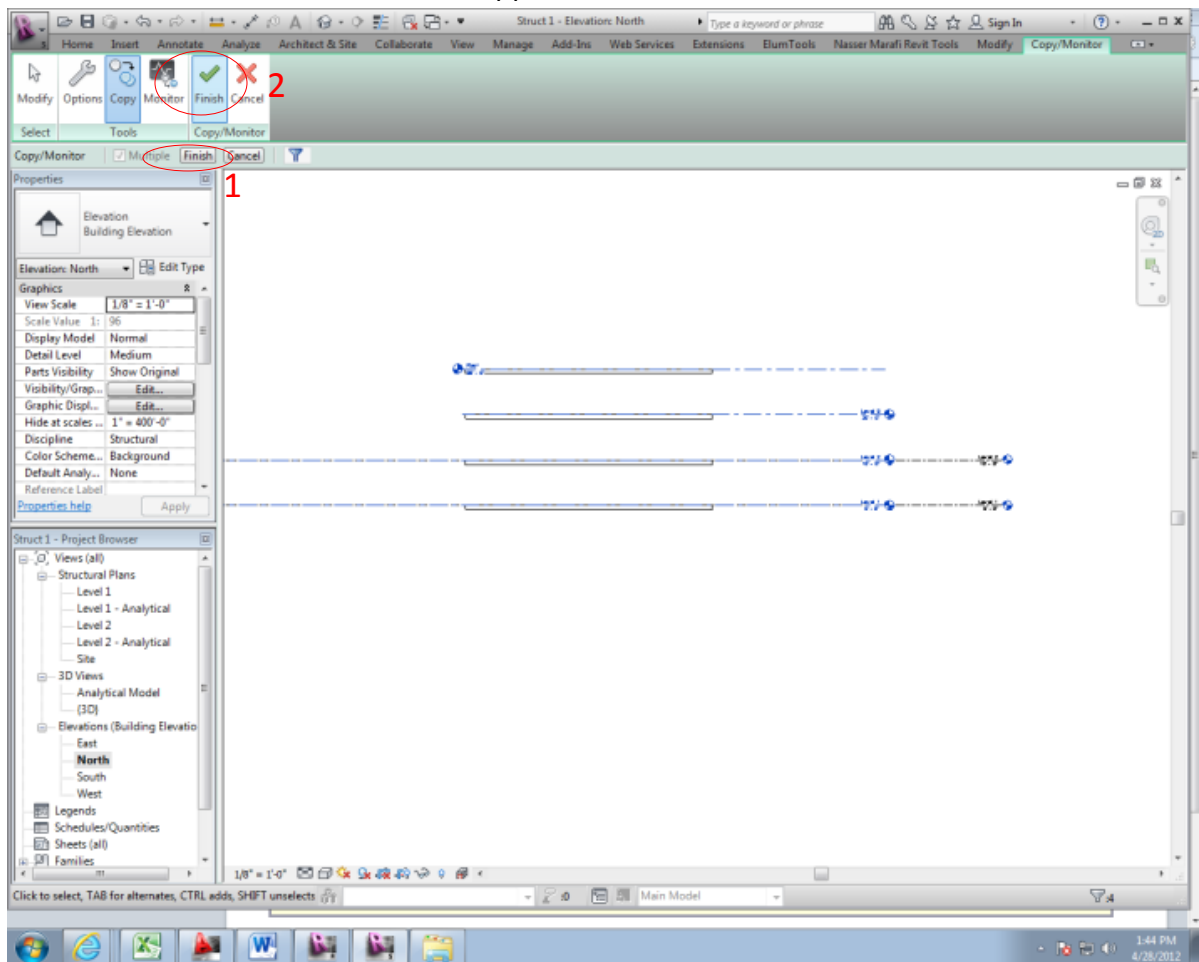
6. Select the “multiple” radio box option and draw a box around everything in view



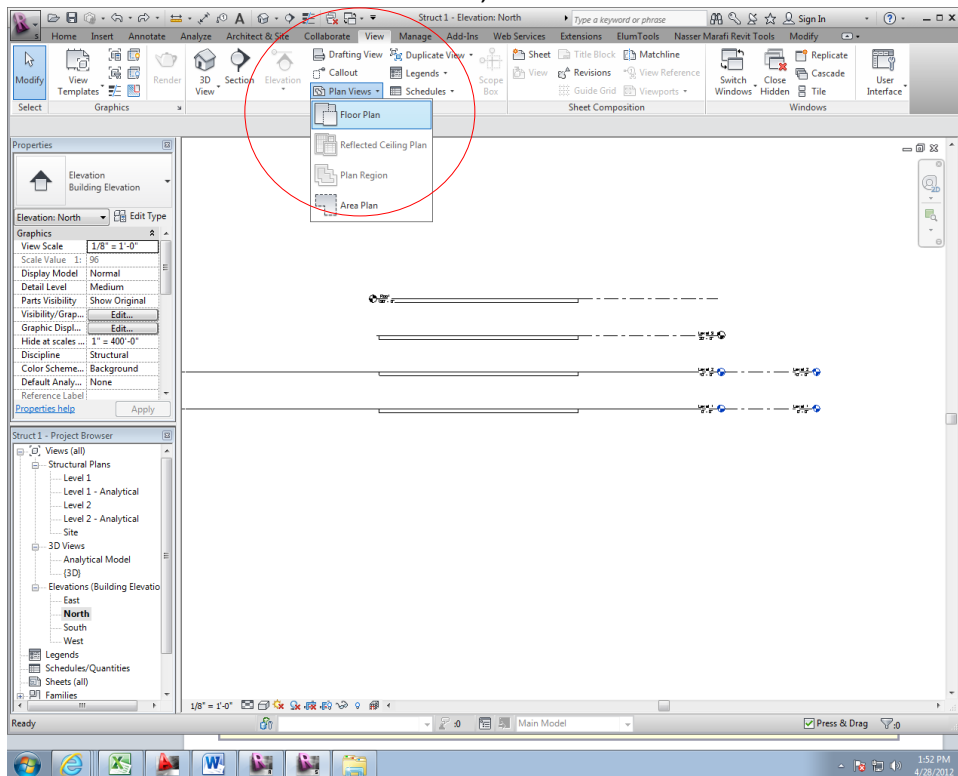
7. Select the “funnel filter tool” in the bottom right corner and then uncheck everything besides “Levels”. Hit “OK”.



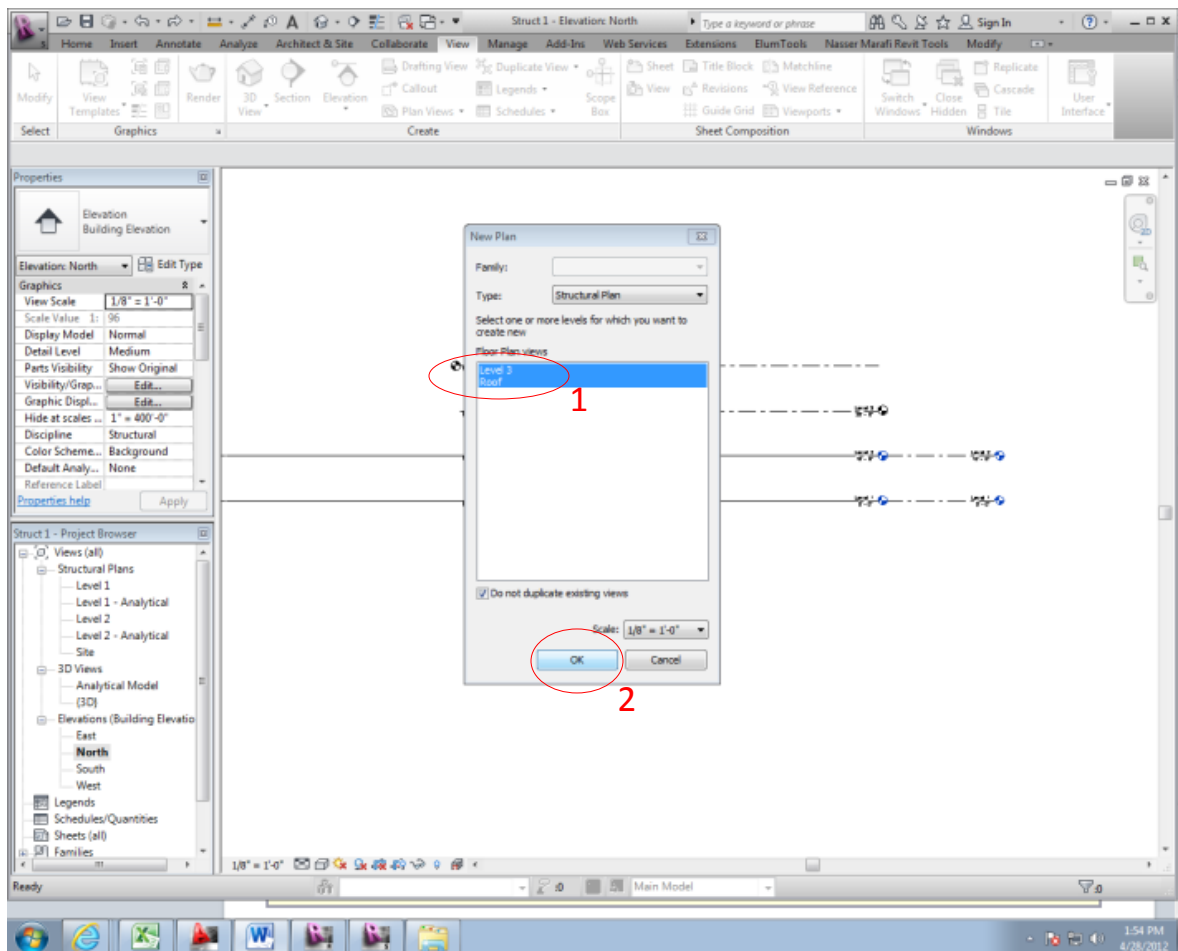
8. Click the lower “Finish” and then the upper “Finish” buttons.



9. In the “View” tab. Click “Plan Views”; “Floor Plan”.



10. Using the Ctrl or Shift keys, Select all the levels that appear and hit “OK”



11. Now you should notice that the levels from your linked file are now visible in the properties tab and can now be used as reference planes for your current model.

